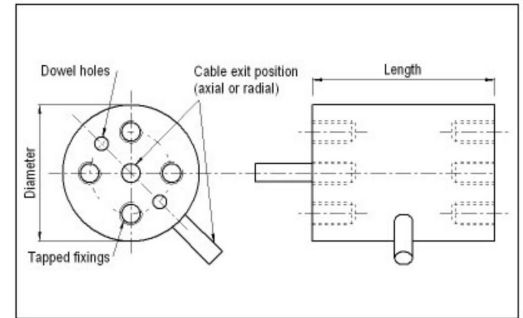


F311 Custom Static Torque Transducer

2 to 2000Nm



Style A

Specification

| Parameter | Value | Unit |
|----------------------------------------------------------------------|--------------------|---------------------------|
| Zero load output | $\hat{A}\pm 4$ | % RT |
| Temperature effect on rated output per $\hat{A}^{\circ}\text{C}$ | $\hat{A}\pm 0.005$ | % AT |
| Temperature effect on zero load output per $\hat{A}^{\circ}\text{C}$ | $\hat{A}\pm 0.01$ | % RT |
| Temperature range - Compensated | -10 to +50 | $\hat{A}^{\circ}\text{C}$ |
| Temperature range - Safe | -10 to +80 | $\hat{A}^{\circ}\text{C}$ |
| Sealing | IP65 | |
| Cable length | 2 | m |

We can manufacture static torque transducers with ranges between 2Nm and 2000Nm to your specific requirements.

For lower ranges please see the F315. If you contact us using the "Make an enquiry" button and send it to our sales department we will respond with a quotation, usually within 24 hours. We need at least one contact number or email address to return the quotation!

Notes

- AL = Applied load.
- RL = Rated load.
- Temperature coefficients apply over the compensated range.

Novatech Measurements Limited

83 Castleham Road, St Leonards on Sea, East Sussex, TN38 9NT, England.

Telephone: +44 (0)1424 852744

Fax: +44 (0)1424 853002

E-mail: info@novatechloadcells.co.uk